

# UTI VS. Delirium

## Urinary Tract Infection

Confusion alone is not a reason to assume a UTI is present.  
Primary symptoms are usually urinary in nature  
(flank pain, increased urinary frequency, gross hematuria).



## Delirium

The acronyms below are additional contributing factors to delirium that should be ruled out.

**D** Dehydration, Depression, Drugs  
(new medication, change in dose or withdrawal)



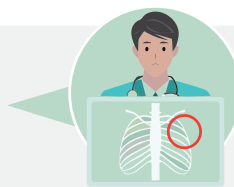
**E** Electrolytes; (dehydration, metabolic issues)



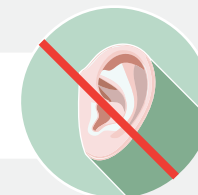
**L** Lack of drugs (unmanaged pain)



**I** Infection (pneumonia, sepsis)



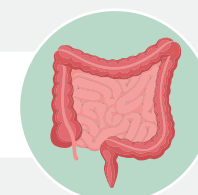
**R** Reduced sensory input (vision or hearing impairment)



**I** Intracranial issues (stroke, head injury, seizure)



**U** Urinary or bowel problems (retention or constipation)



**M** Myocardial and Pulmonary (heart or lung condition)

