

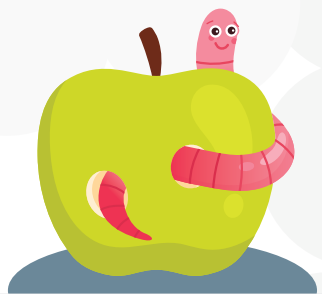
IPAC LEAD AS THE MICROBIOLOGIST

As an IPAC Lead, your microbiology expertise is the first line of defense.

Your expertise in identifying risks, analyzing lab data, and implementing infection prevention strategies is critical to protecting residents and staff, preventing outbreaks, and ensuring a safer environment for all.

Your role is vital in stopping outbreaks before they start.

Learn with us how to strengthen your impact! We're here to support you every step of the way!



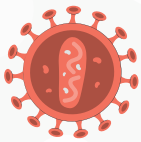
Contact us today to learn more:

☎ 1 (866) 299-4722

✉ info@ipacconsulting.com

🌐 www.ipacconsulting.com

🌐 [linkedin.com/company/ipac-consulting-infectioncontrol](https://www.linkedin.com/company/ipac-consulting-infectioncontrol)



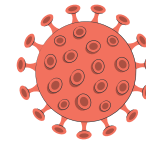
Microbial Classification & Control

IPAC Leads classify microorganisms, assess transmission risks, and identify high-risk populations. Effective infection control relies on proper diagnostics, specimen collection, and targeted precautions, while treatment strategies include empiric, prophylactic, and therapeutic interventions.



Microorganism Identification

Understanding the microorganisms present in the facility is critical. **The IPAC Lead interprets** lab results, differentiating between harmless colonization and true infection. They guide healthcare teams in responding to antimicrobial resistance and unusual pathogen patterns.



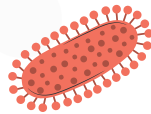
Specimen Collection & Handling

Accurate lab results start with proper specimen collection. **The IPAC Lead trains** staff on handling, labeling, and transporting biohazardous samples, reducing the risk of contamination and ensuring timely, reliable diagnostics.



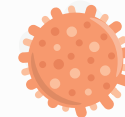
Antimicrobial Stewardship

With rising antibiotic resistance, **the IPAC Lead holds** a crucial role in antimicrobial stewardship. They educate staff on appropriate antibiotic use, monitor prescribing patterns, and promote strategies to prevent the overuse of critical medications.



Interpretation of Lab Results

The IPAC Lead analyse lab results, crucial for detecting and managing infections. Gram stains, susceptibility tests, and antibiograms help identify pathogens and guide treatment. Strain typing supports outbreak investigations, while recognizing resistance patterns and contamination ensures accurate diagnoses. These insights drive timely infection prevention measures and antimicrobial stewardship.



Collaboration & Communication

Infection control is a team effort. **The IPAC Lead works** closely with healthcare providers, laboratories, and public health to share critical information, develop policies, and ensure infection prevention strategies are consistently followed.



Contact us today to learn more:

☎ 1 (866) 299-4722

✉ info@ipacconsulting.com

🌐 www.ipacconsulting.com

🌐 [linkedin.com/company/ipac-consulting-infectioncontrol](https://www.linkedin.com/company/ipac-consulting-infectioncontrol)

OUR EDUCATION PROGRAMS EMPOWER YOUR IPAC LEAD TO KEEP YOUR LTC HOME SAFE WITH:

- ✓ Tailored Infection Control Plans
- ✓ Expertise in Microbial Threats
- ✓ Evidence-Based Practices
- ✓ Environmental Monitoring and Assessment
- ✓ Outbreak Prevention and Management
- ✓ Staff Education and Training
- ✓ Regulatory Compliance



We Are Here When
You Need Us The Most

WWW.IPACCONSULTING.COM
INFO@IPACCONSULTING.COM

